



Creation for Wonderful Life



iChem-720

Auto Chemistry Analyzer

- Random access, discrete, fully automatic, STAT priority
- 200T/H(single/double reagent)
- Friendly interface, easy operation
- Stable system supported by multiple patents
- 50nm polished probe, full digital intelligent liquid level detection, clot detection and collision protection
- LIS interface, intelligent resource management, remote maintenance
- Reagent bottle designed uniquely, residual volume less than 0.3ml
- Automatic barcode
- Support multi-language

Reagent system

- Syringe assembly innovatively designed extend the working life by 50%, accurate position
- Unique square lead rail simple structure, accurate position, long working life and low break down
- Liquid level detection, clot detection and collision protection
- Refrigerated reagent disk
- Automatic washing both interior and exterior



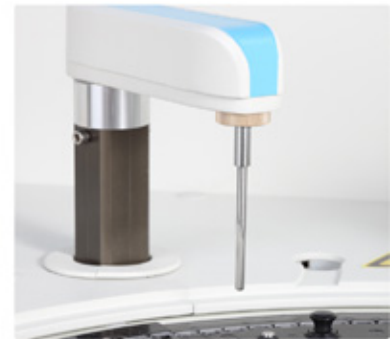
Reaction system

- 120 recyclable cuvettes
- 8-step auto warm water washing with detergent clean completely and low carry over
- Thermostat technology ensures temperature is 37°C, the temperature control variation is $\pm 0.1^{\circ}\text{C}$
- Washing needles collision protection



Mix system

- Collision protection
- Unique square lead rail simple structure, accurate position, long working life and low break down
- The surface of stirrer is polished to avoid liquid suspension and reduce cross-contamination



Photometry system

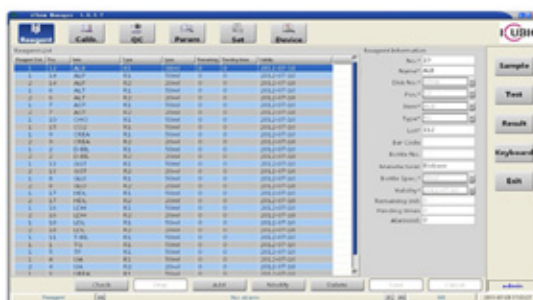
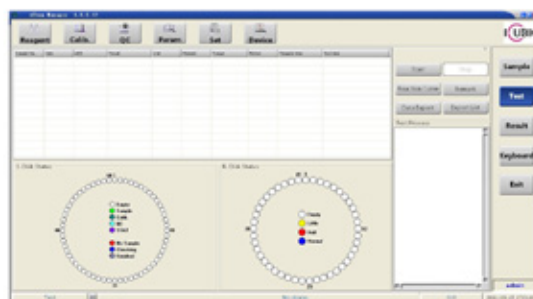
- 20W/12V long life light source
- Reaction cuvette with resistance against acid and alkali
- Easy maintenance

iChem-720

Auto Chemistry Analyzer

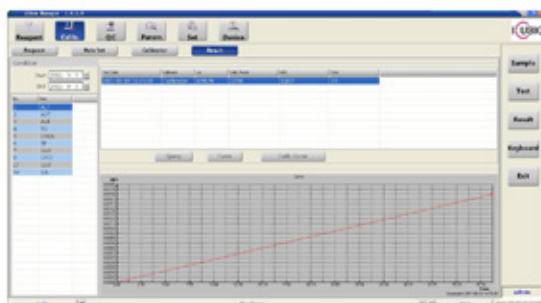
Perfect function

- Friendly interface and convenient operation
- Real-time reaction curve
- Support reaction curve data export
- The position of starting cuvette can be defined freely, each cuvette can be used in balance
- Real-time multiple alarm function
- Support retest, automatic save final result
- Repeat test, automatic save each result
- Support multiple test results review (sample/item)
- Support batch test results export
- Test quantity can be calculated according to current reagent volume before testing
- Reagent residual can be real-time monitored, analyzed and alarmed
- Intelligent resource management



QC and Calibration

- Automatic calibration
- Support Westgard multi-rule, L-J plot
- QC position and calibration position can be defined freely
- Support multiple QC request modes (Control liquid/Item)
- Support multiple QC test by composite control liquid



iChem-720

Auto Chemistry Analyzer

Technical Specifications

System function

Throughput	200 T/H (single/double reagent)
Analysis method	Two-point, end-point, kinetic
Analysis item	200 colorimetric items

Sample system

Sample position	60, discretionary QC & Standard position
Sample / reagent probe	1 probe for sample and reagent
Sample cup	Standard cup ϕ 12X37mm Blood tube ϕ 12X100mm Plastic tube ϕ 12X100mm
Sample volume	2~100 μ l, 0.1 μ l stepping
Sample probe detection	Liquid level detection, clot detection & collision protection
Cleaning	Automatic washing both interior and exterior

Reagent system

Reagent position	45, refrigerated reagent disk
Reagent volume	10~500 μ l, 0.5 μ l stepping
Reagent bottle	20ml, 50ml
Reagent probe detection	Liquid level detection and collision protection
Cleaning	Automatic washing both interior and exterior

Reaction system

Reaction position	120 optical cuvettes
Specification	Optical diameter is 5.8mm
Reaction volume	180~500 μ l
Temperature	37 $^{\circ}$ C, \pm 0.1 $^{\circ}$ C
Mixing stirrer	1 mixing stirrer with collision protection
Washing needle	Collision protection

Options



Barcode reader



Touch screen

Wastewater treatment	Waste liquid level alarming
Reaction cuvette cleaning	8-step auto warm water washing with detergent

Optical System

Light source	20W/12V halogen lamps
Spectrophotometry	Reversed
Wavelength	340nm, 405nm, 450nm, 510nm, 546nm 578nm, 630nm, 700nm (2 optional)
Absorption range	0~5.0Abs
Resolution	0.0001Abs

Calibration and QC

Calibration method	1-point linear, 2-point linear, multiple point linear, non-linear method, Logit-log4P, Logit-Log5P, Spline, Exponential5p, Polynomial5p and Parabola
QC method	Real-time QC, days QC & day QC
Control rule	Westgard multi-rule, L-J plot

Operating system

Operating system	Windows XP/ Windows 7
Interface	Standard RS-232
Language	Multi-language

Working conditions

Power supply	AC110~220V, 50/60Hz, 500W
Temperature	15~30 $^{\circ}$ C
Humidity	35~80%
Water consumption	7L/hour
Dimension	1015*760*620mm
Net weight	97KG



Creation for Wonderful Life

Shenzhen iCubio Biomedical Technology Co.,Ltd.

Add: 6/F, Jinda Technology Center, No.8 Kefeng Road,
Hi-tech Industry Park, Nanshan District, Shenzhen 518057, China

Tel: +86 755 26610931/21534635 Fax: +86 755 61658199

Email: info@icubio.com Website: http://www.icubio.com

We reserve the right to make any modifications without prior notification.

E201107



DISTRIBUTOR